



**ARCHIMED**

**PROPERTIES**



# GARDJOLA RESIDENCES

Reggie Miller Street, Gzira



There's living, and then there's Gardjola Residences living. Rising elegantly in a sought-after area, these homes come with priceless views of Malta's iconic landmarks and an abundance of shopping, cultural, entertainment and culinary experiences all at your fingertips.

Providing the ultimate metropolitan lifestyle, from here, it's just a short stroll to the Sliema promenade, Balluta Bay, Malta's biggest shopping district, health clubs, premier schools, top class medical facilities and much more.

From the most refined wall and floor finishes to the finest sanitary ware and fittings, this is the place to be for individuals who wish to enjoy life in the most privileged manner conceivable.

CONTEMPORARY LIVING SPACES  
WITH AWE-INSPIRING SEA  
& CITY VIEWS



Metropolitan  
Lifestyle



Experience



Views

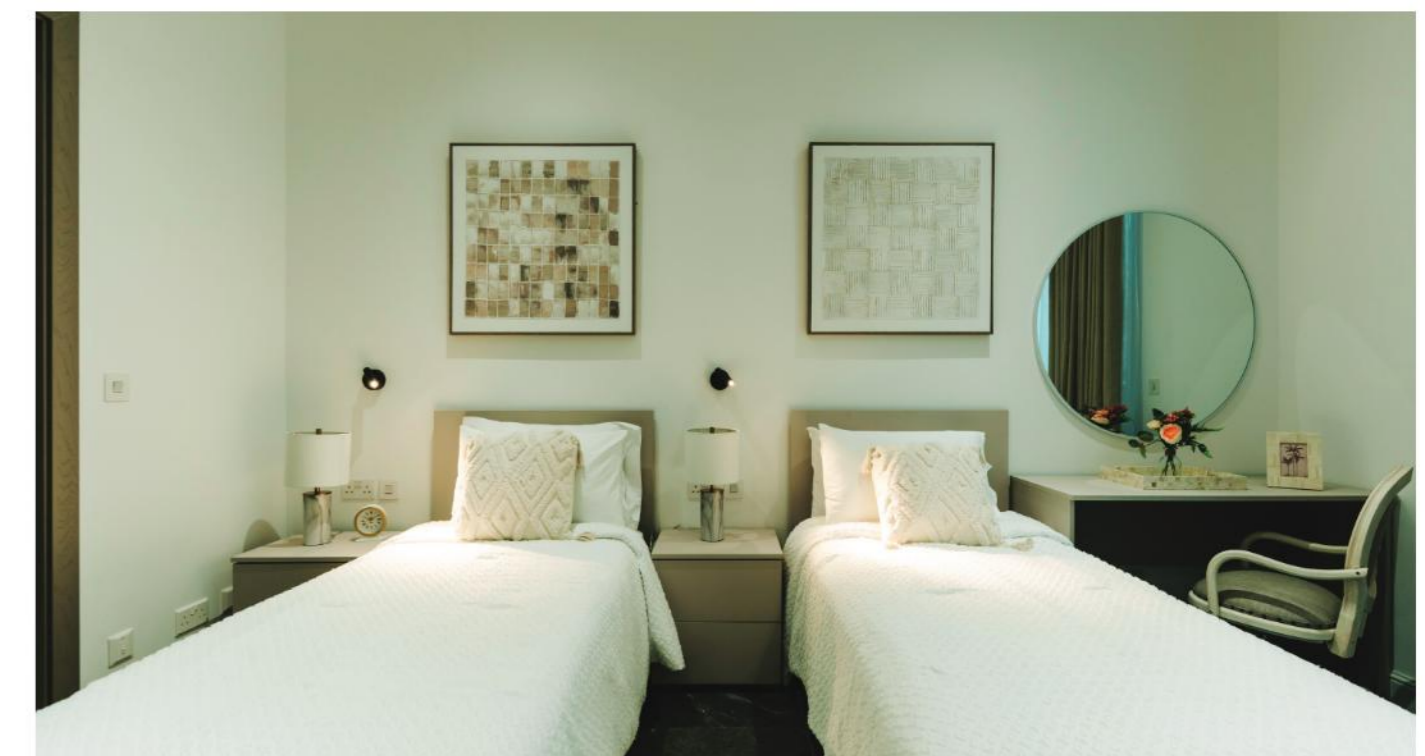
## THE ULTIMATE METROPOLITAN LIFESTYLE.

- // 1 x 1 BEDROOM APARTMENT
- // 2 x 2 BEDROOM APARTMENTS
- // 7 x 3 BEDROOM APARTMENTS
- // 1 x 4 BEDROOM DUPLEX PENTHOUSE
- // UNDERLYING LOCK UP GARAGES

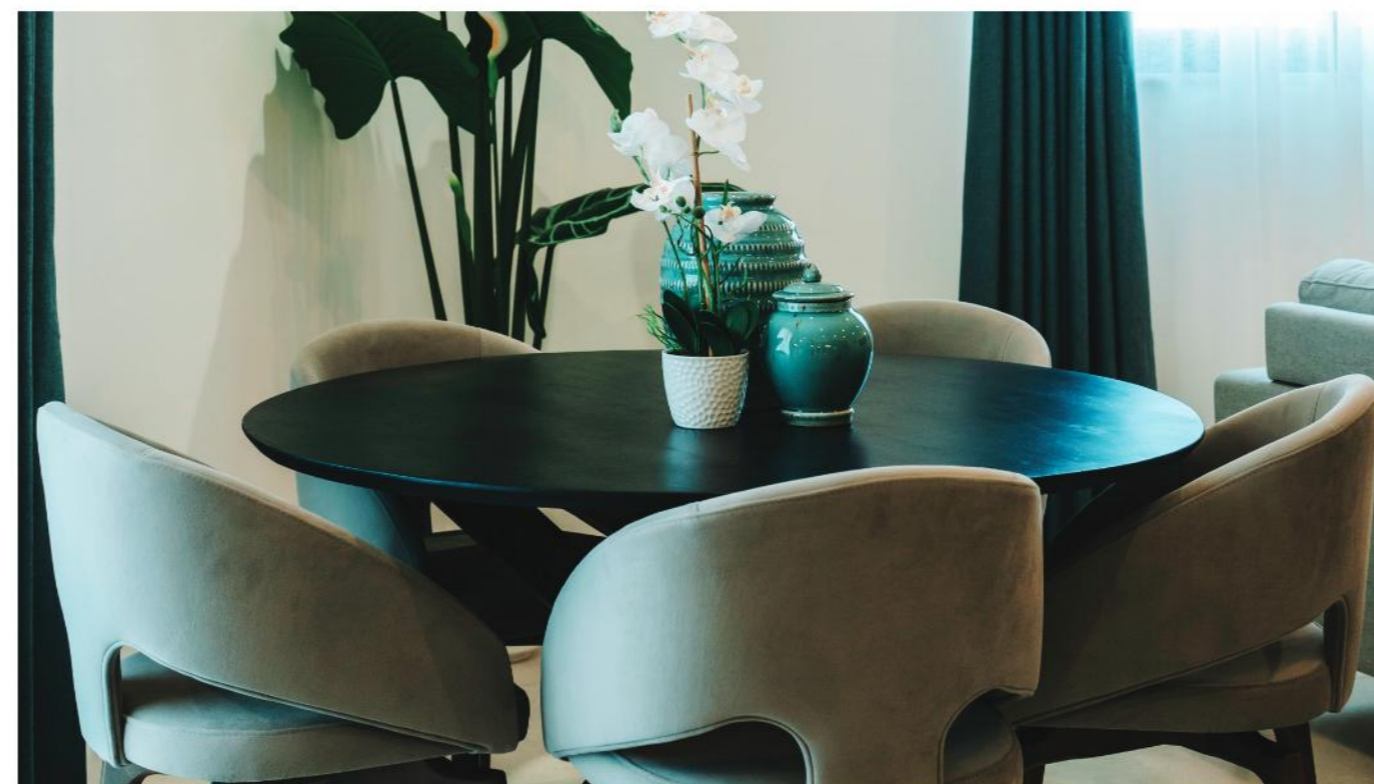
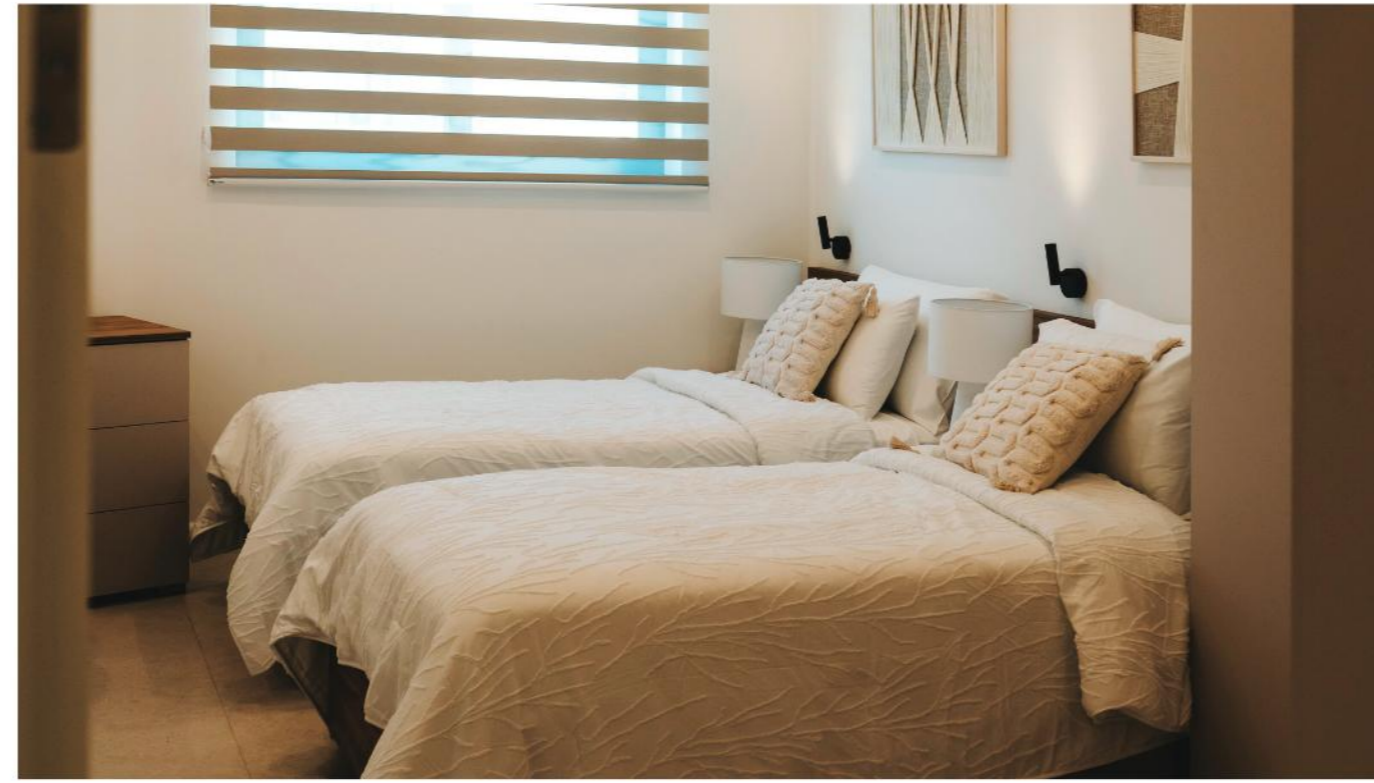
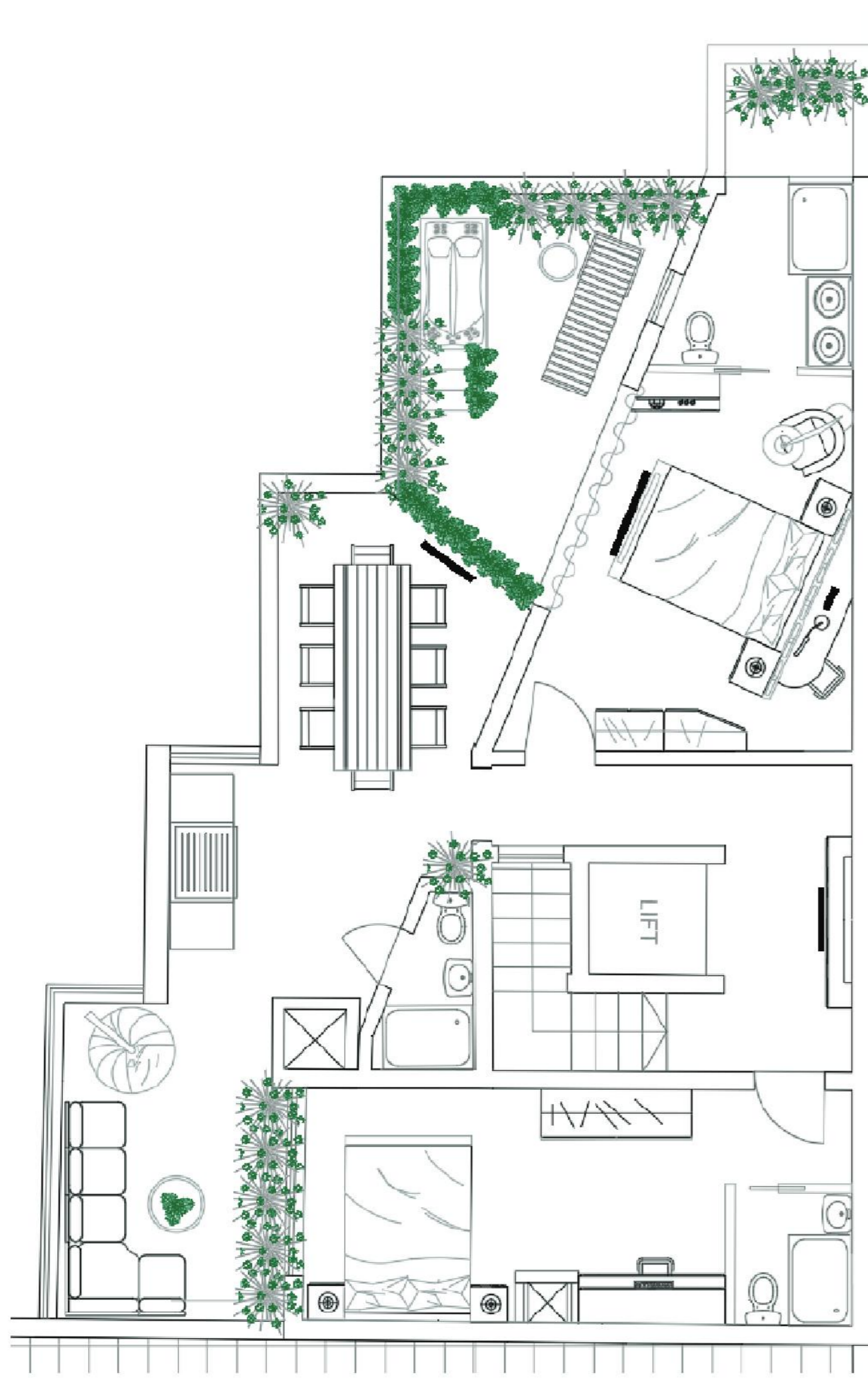




# Duplex Penthouse Level 8



# Duplex Penthouse Level 9



GARDJOLA RESIDENCE  
SECOND FLOOR LEVEL APARTMENT



Disclaimer: All pictures, plans, layouts, information, data and details included in this brochure are indicative only and may change at any time up to the final 'as built' status in accordance with final designs of the project, regulatory approvals and planning permissions.

GARDJOLA RESIDENCE  
THIRD FLOOR LEVEL APARTMENT



Disclaimer: All pictures, plans, layouts, information, data and details included in this brochure are indicative only and may change at any time up to the final 'as built' status in accordance with final designs of the project, regulatory approvals and planning permissions.

# DE ROHAN PARC RESIDENCES

Anthony Aquilina Street, Zebbug



A rare and innovative development where the well-being of residents takes centre stage. Residents have full accessibility to a 700<sup>sqm</sup> leisure parc including a communal swimming pool, BBQ stations, underlying lock-up garages, and other facilities which all in all make up half of the whole development area.

With a variety of unit types ranging from 3-bedroom maisonettes, apartments, and penthouses, including bathrooms and internal doors, De Rohan Parc offers you an unparalleled lifestyle.

Discover a space where you and your family can grow. This is where you will live your happiest moments. This is home!

AN OASIS STEEPED  
IN BEAUTY & LUXURY



Swimming  
Pool



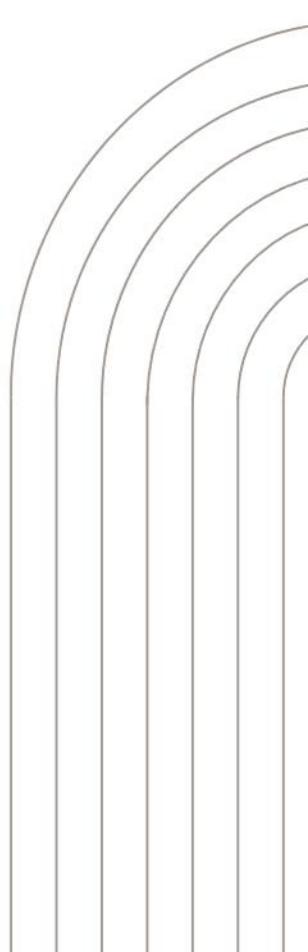
Family  
Parc



BBQ  
Stations

WHERE URBAN LIVING  
MEETS NATURE.

- // 4 X 3 BEDROOM MAISONETTES
- // 12 X 3 BEDROOM APARTMENTS
- // 12 X 3 BEDROOM PENTHOUSES
- // 30 UNDERKYING LOCK UP GARAGES





DE ROHAN PARC RESIDENCES  
IS A RARE & INNOVATIVE DEVELOPMENT  
WHERE THE WELLBEING OF RESIDENTS  
IS PARAMOUNT.



Disclaimer: All pictures, plans, layouts, information, data and details included in this brochure are indicative only and may change at any time up to the final 'as built' status in accordance with final designs of the project, regulatory approvals and planning permissions.

**AN EXCEPTIONAL AND CUTTING-EDGE ENDEAVOR WHERE THE SPOTLIGHT IS FIRMLY ON THE RESIDENTS' PROSPERITY.**



Disclaimer: All pictures, plans, layouts, information, data and details included in this brochure are indicative only and may change at any time up to the final 'as built' status in accordance with final designs of the project, regulatory approvals and planning permissions.

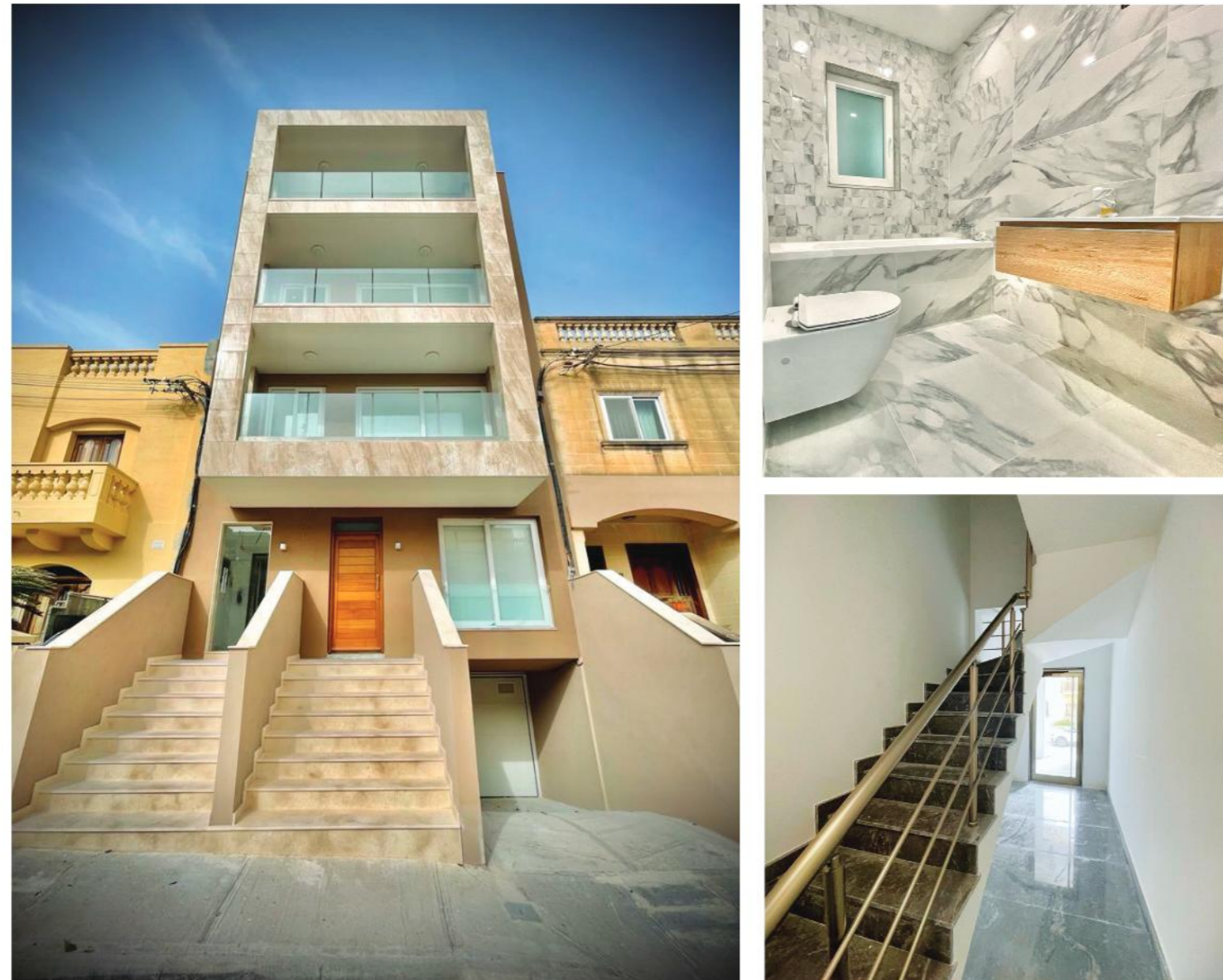
**RESIDENTS WILL HAVE FULL ACCESSIBILITY TO A SWIMMING POOL, FAMILY-FRIENDLY PARK, KID'S AREA, BBQ STATIONS & OTHER FACILITIES.**



Disclaimer: All pictures, plans, layouts, information, data and details included in this brochure are indicative only and may change at any time up to the final 'as built' status in accordance with final designs of the project, regulatory approvals and planning permissions.

# LAPIRA COURT

Hal-Lija



Convenient  
Location



Quality of  
Life



Country  
Views

Endowed with a quiet atmosphere and serene surroundings, Lapira Court is a collection of exclusive 2- and 3-bedroom residential units, boasting country views, carefully chosen modern finishes, stylish touches and intelligent design.

The fantastic location and proximity to many convenient establishments bode well for a bright future and an exceptional quality of life.

// 1 X 3 BEDROOM MAISONETTE // 3 X 3 BEDROOM APARTMENTS

// 1 X 2 BEDROOM PENTHOUSE // UNDERLYING GARAGES

# PJAZZA MEME APARTMENTS

Pjazza Meme Scicluna, Gzira



Tranquil  
Atmosphere



Nearby  
Beach



Exceptional  
Living Experience

Nestled in the heart of the charming coastal town of Gzira, Pjazza apartment is an exclusive collection of 1- and 3-bedroom residential units that offer a serene and tranquil atmosphere. With picturesque country views, carefully selected modern finishes, stylish touches, and intelligent design, Pjazza Apartments offers a truly exceptional living experience.

The fantastic location of Pjazza Apartments puts residents within easy reach of many convenient establishments, including restaurants, cafes, shops, and more. Whether you're looking to explore the town or enjoy the nearby beach, Lapira Court's location bodes well for a bright future and an exceptional quality of life. Experience the best of both worlds with Lapira Court - a peaceful retreat in the heart of a bustling town.

// 1 X 3 BEDROOM MAISONETTE // 3 X 3 BEDROOM APARTMENTS

// 1 X 2 BEDROOM PENTHOUSE // 1 X 2 BEDROOM PENTHOUSE

# PEGASUS APARTMENTS

Triq il-Molletta, Swieqi



Tranquility



Quality



Ultimate in Comfort

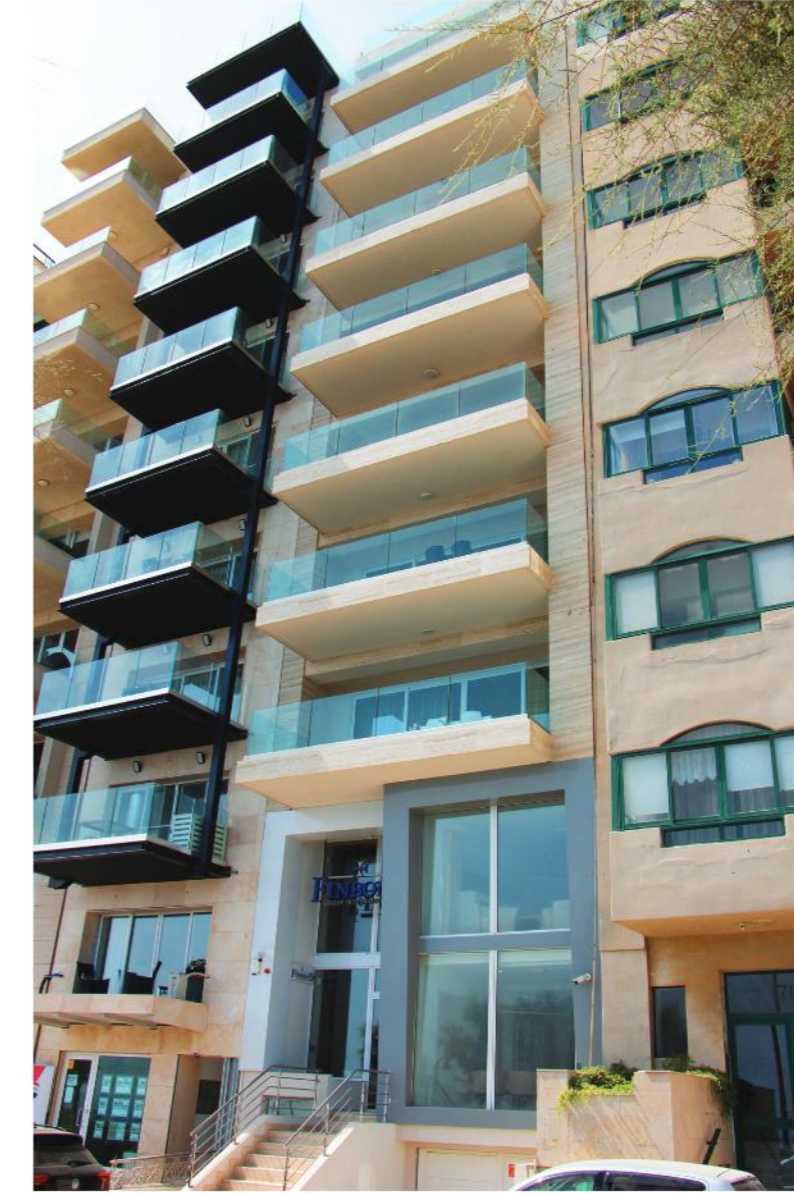
Pegasus Apartments offer the perfect balance of quality of lifestyle and urban experience. The village of Hal-Lija is renowned for its picturesque streets, historic landmarks, and traditional Maltese architecture. Residents of Pegasus Apartments can enjoy a peaceful, laid-back lifestyle while still being within easy reach of the city's many conveniences.

The apartments at Pegasus have been designed with quality of lifestyle in mind. Each unit features stylish and contemporary finishes, intelligent design, and ample natural light to create a bright and welcoming living space. Whether you're relaxing at home or entertaining guests, Pegasus Apartments offer the ultimate in comfort and luxury.

Discover a new standard of living at Pegasus Apartments - where country views, quality of lifestyle, and urban experience come together to create a truly exceptional living experience.

# FINBOND

Tower Road, Sliema



Luxury



Easy Access



Comfort & Luxury

Introducing Finbond: Your gateway to luxury living on Tower Road, Sliema. Nestled in the heart of this vibrant coastal town, Finbond offers exquisite waterfront views and easy access to trendy cafes, boutique shops, and the lively promenade. Experience the perfect blend of serenity and urban charm at Finbond.

Embrace a lifestyle of sophistication and leisure at Finbond. Sliema's rich cultural tapestry, including festivals and historical sites, awaits exploration. Invest in your future with a property in this prime location, where real estate value and rental potential thrive. Live the Finbond life, where culture meets smart investment.

# SEA SIDES SUITES

Reggie Miller Street, Msida



Nestled alongside the Ta' Xbiex promenade, tastefully designed and crafted to embody both timeless style and contemporary class, this development comprises of 20 residential units and 20 underlying car spaces. Anyone who lives here will know they are coming home to a haven of luxurious design and stylish comfort, all in a fantastic location.

The notion of sustainability is portrayed through the integration of green walls in building facades, as well as the incorporation of glass to facilitate natural light throughout the day.

Ranging from 2 x 3-bedroom elegant maisonettes, to 15 x 3-bedroom modern apartments, and 3 x 2-bedroom duplex penthouses with private swimming pools and views, each household is designed to perfection. This is where luxury, culture and refined living converge.

A FEAST FOR THE SENSES FOR RESIDENTS AND THEIR GUESTS ALIKE, WITH DESIGNS THAT MAXIMISE SPACE AND LIGHT.



Sustainability



Luxurious Design



Stylish Comfort

A HAVEN OF LUXUROUS DESIGN AND STYLISH COMFORT.

- // 2 X 3 BEDROOM MAISONETTES
- // 15 X 3 BEDROOM APARTMENTS
- // 3 X 2 BEDROOM DUPLEX PENTHOUSE
- // PRIVATE SWIMMING POOLS
- // UNDERLYING CAR SPACES

EMBARK ON A TRANSCENDENT LIVING EXPERIENCE AT THIS ARCHITECTURAL MASTERPIECE, WHERE OPULENCE AND INNOVATION CONVERGE SEAMLESSLY.



Sustainability



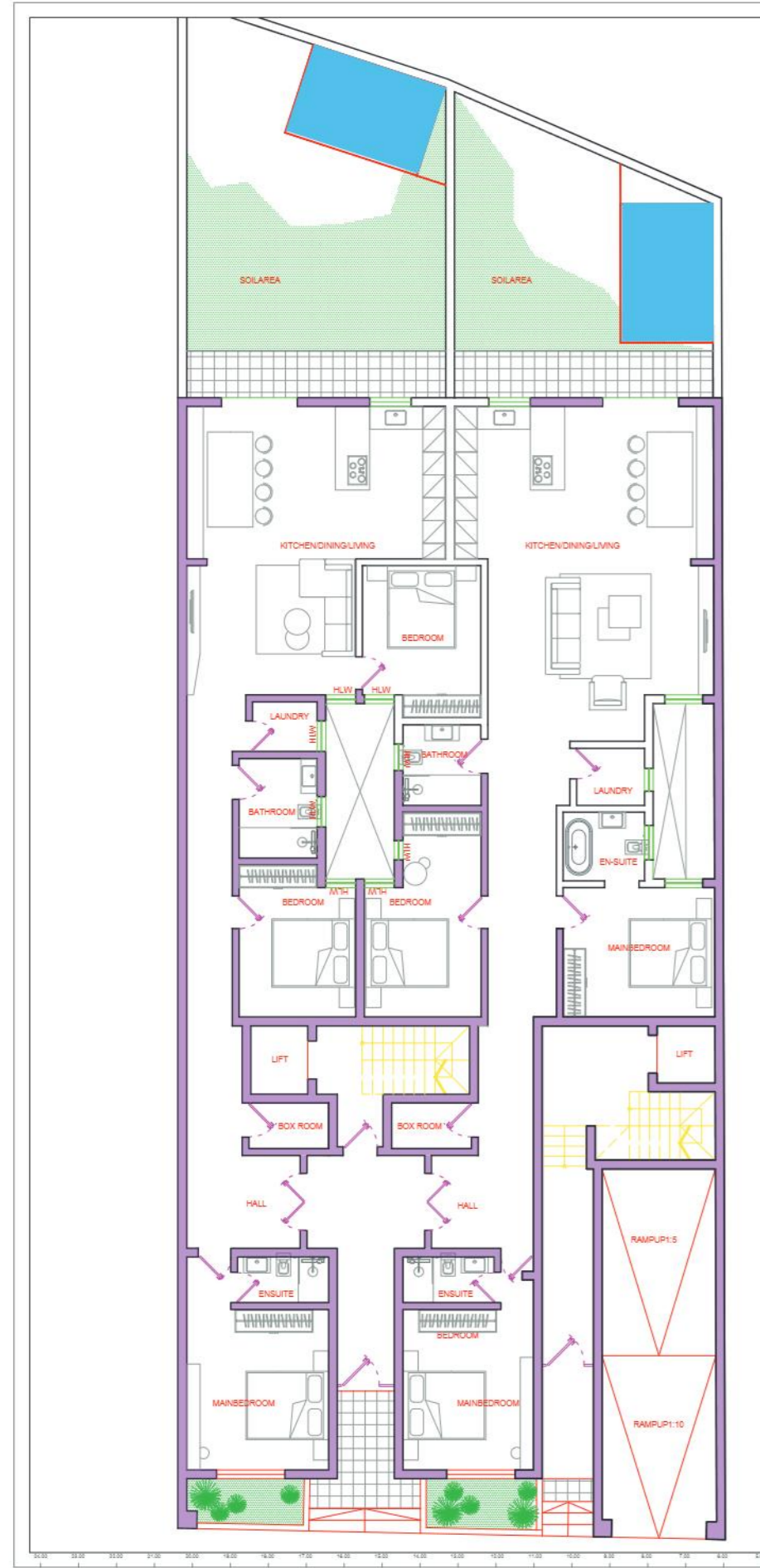
Luxurious  
Design



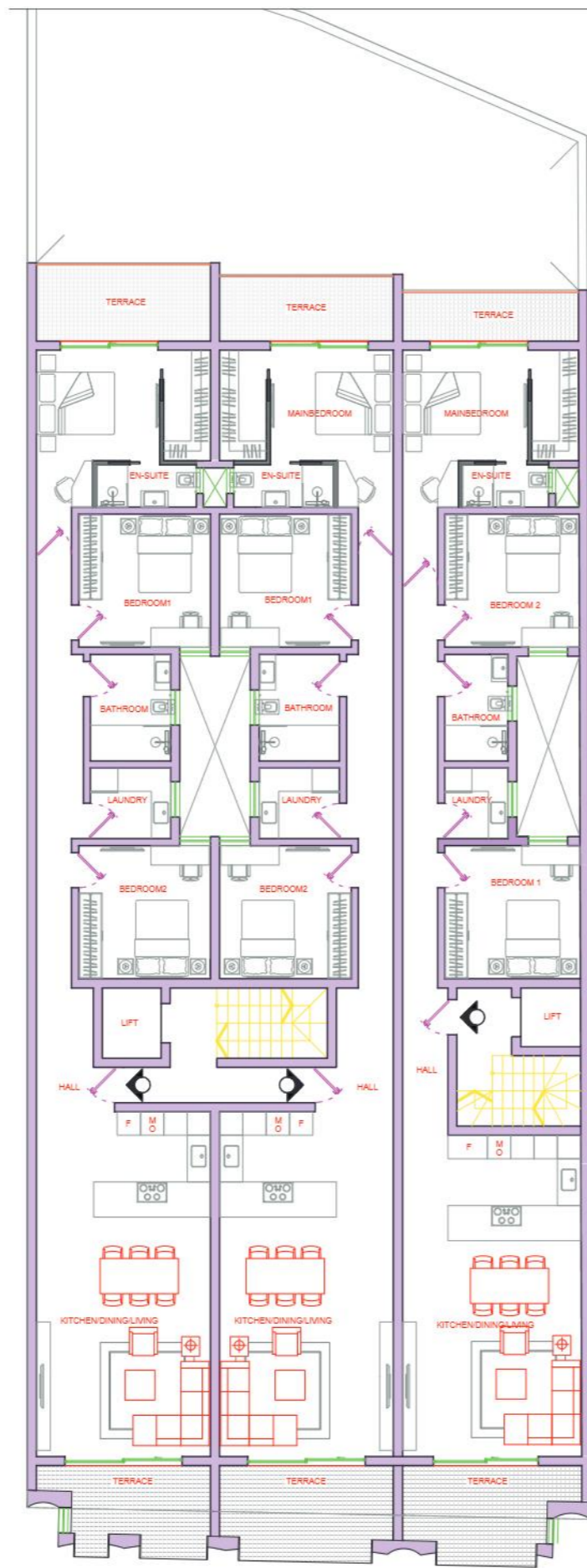
Stylish  
Comfort



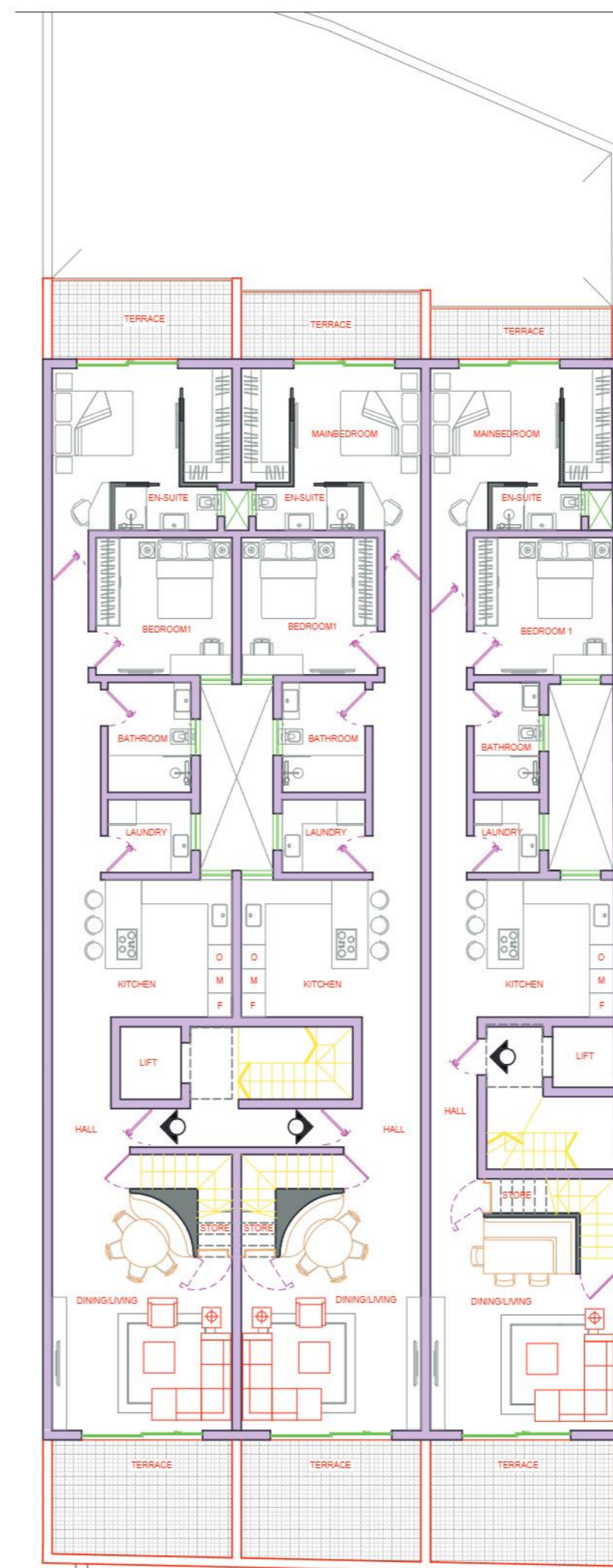
MSIDA  
GROUND FLOOR LEVEL



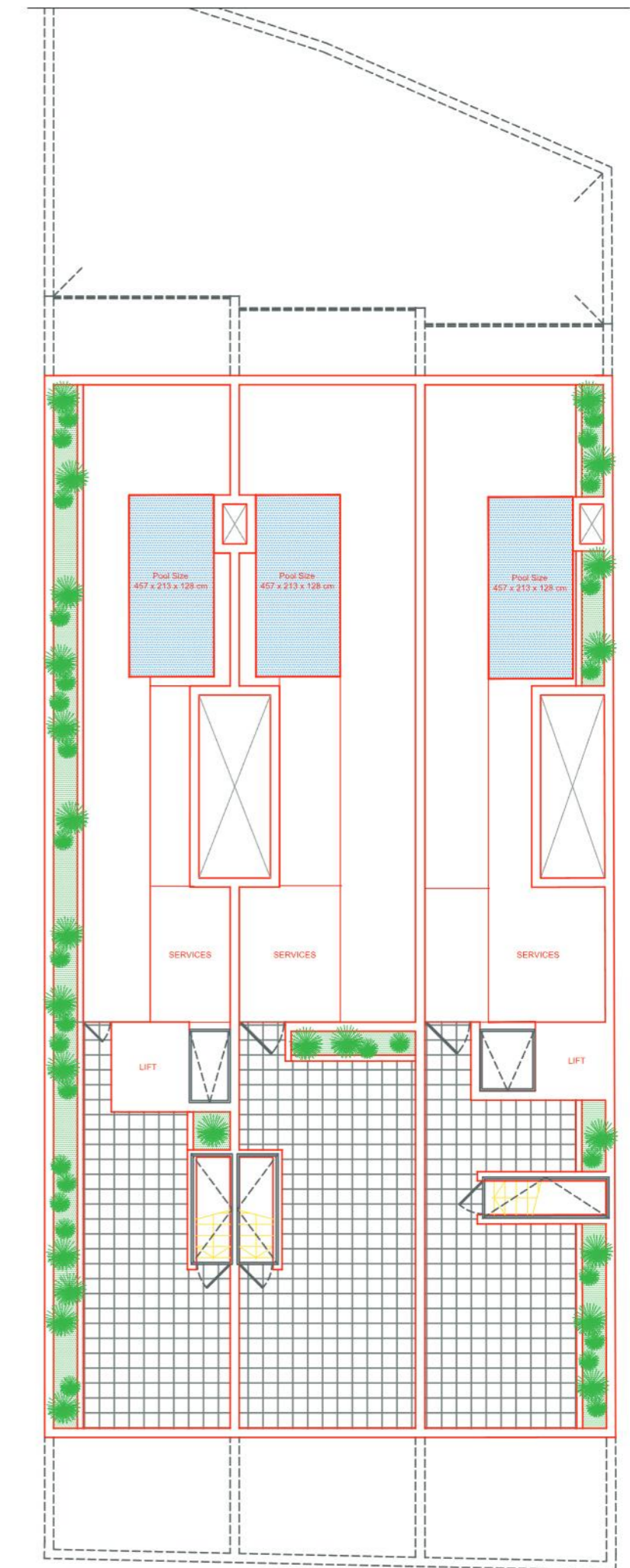
MSIDA  
TYPICAL LEVEL APARTMENT



MSIDA DUPLEX  
PENTHOUSES APARTMENT



UPPER LEVEL



Disclaimer: All pictures, plans, layouts, information, data and details included in this brochure are indicative only and may change at any time up to the final 'as built' status in accordance with final designs of the project, regulatory approvals and planning permissions.

Disclaimer: All pictures, plans, layouts, information, data and details included in this brochure are indicative only and may change at any time up to the final 'as built' status in accordance with final designs of the project, regulatory approvals and planning permissions.

# THE PARAMOUNT GARDEN COMPLEX



Wake up to glorious greens and endless natural beauty as you embrace a resort lifestyle each and every day. Nestled in nature yet footsteps from every amenity you could possibly need, this development is an exquisite collection of spacious residential units at the heart of a modern, family-friendly community.

The homes are being created with one idea in mind: making every day feel like a vacation. All units are being sold highly finished with good quality materials and excellent craftsmanship, including tiles, bathrooms and internal doors.

The combination of airy indoor spaces and spacious private and communal outdoor areas create a wonderful environment to relax and spend quality time with your loved ones.



Glorious  
Greens



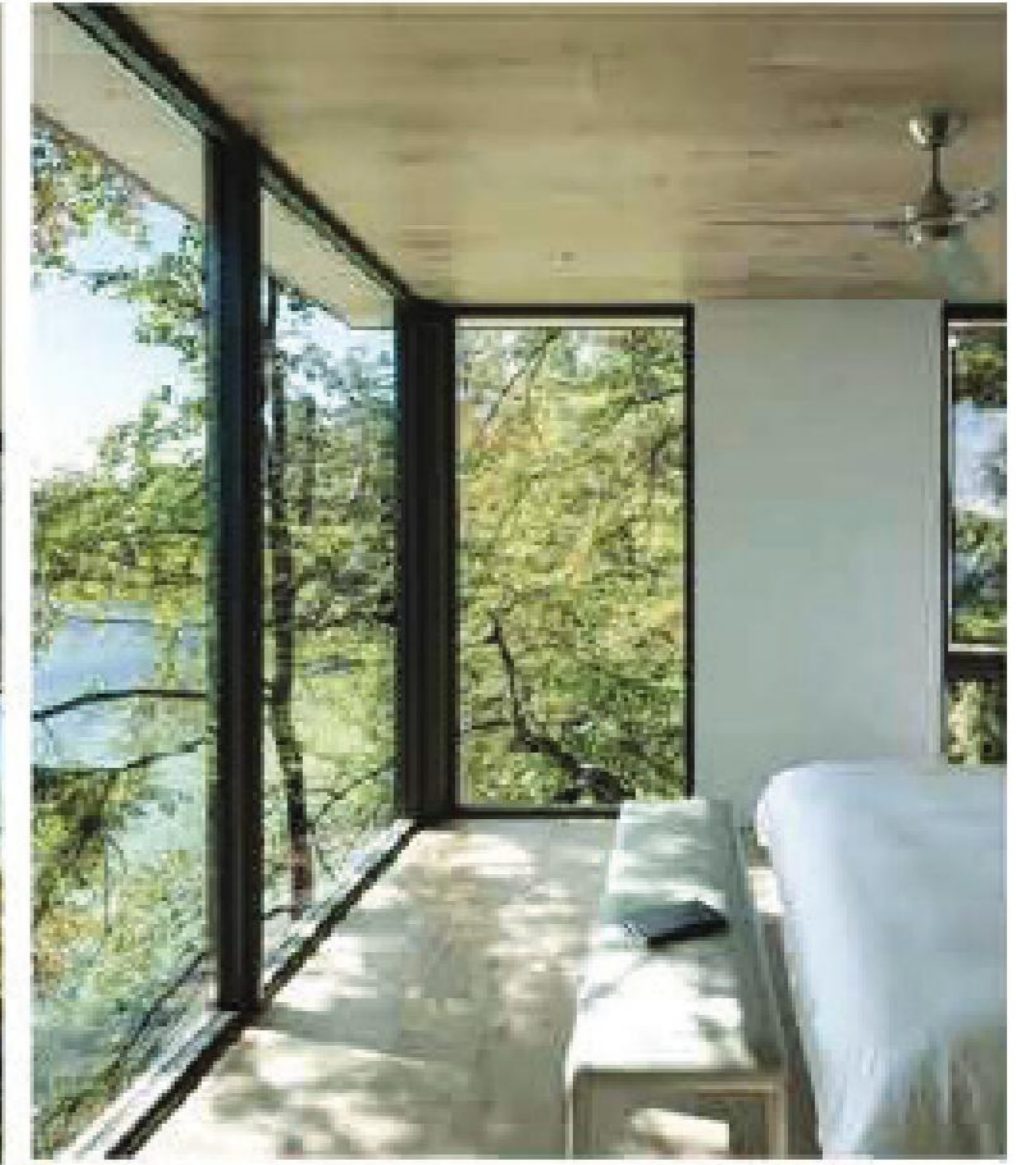
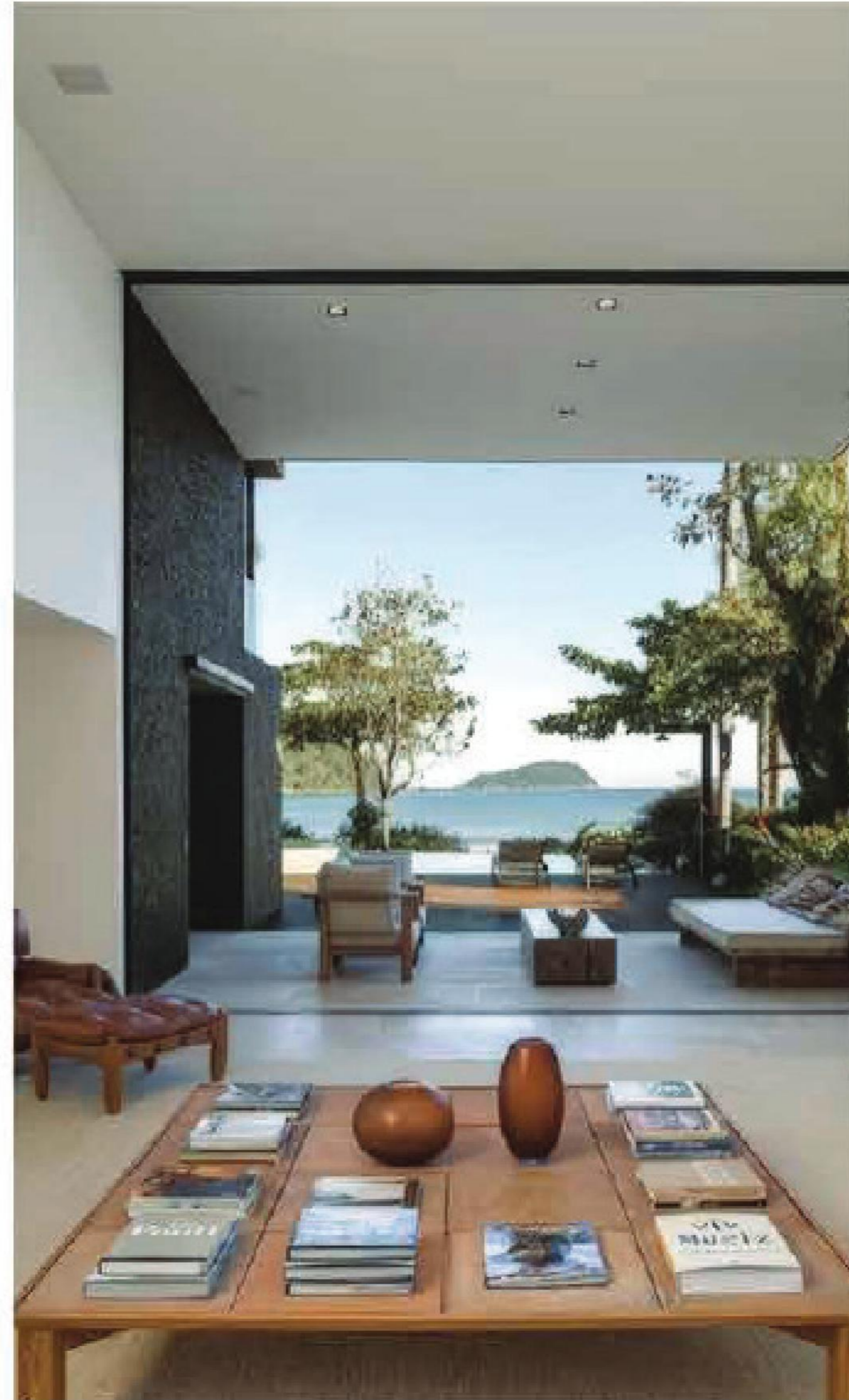
Relaxing  
Environment

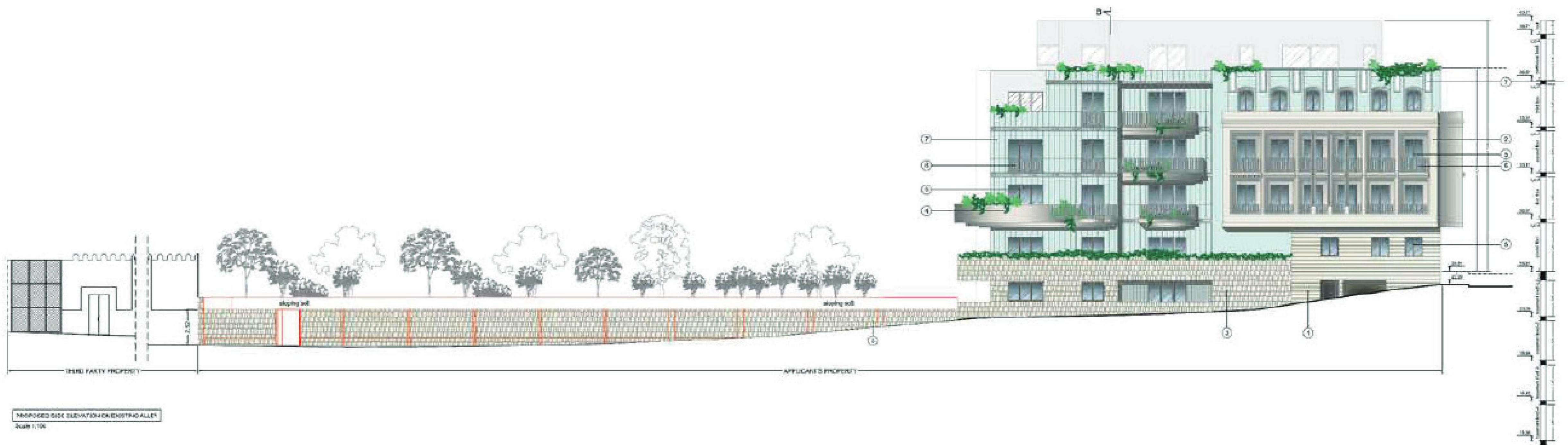


Modern  
Community

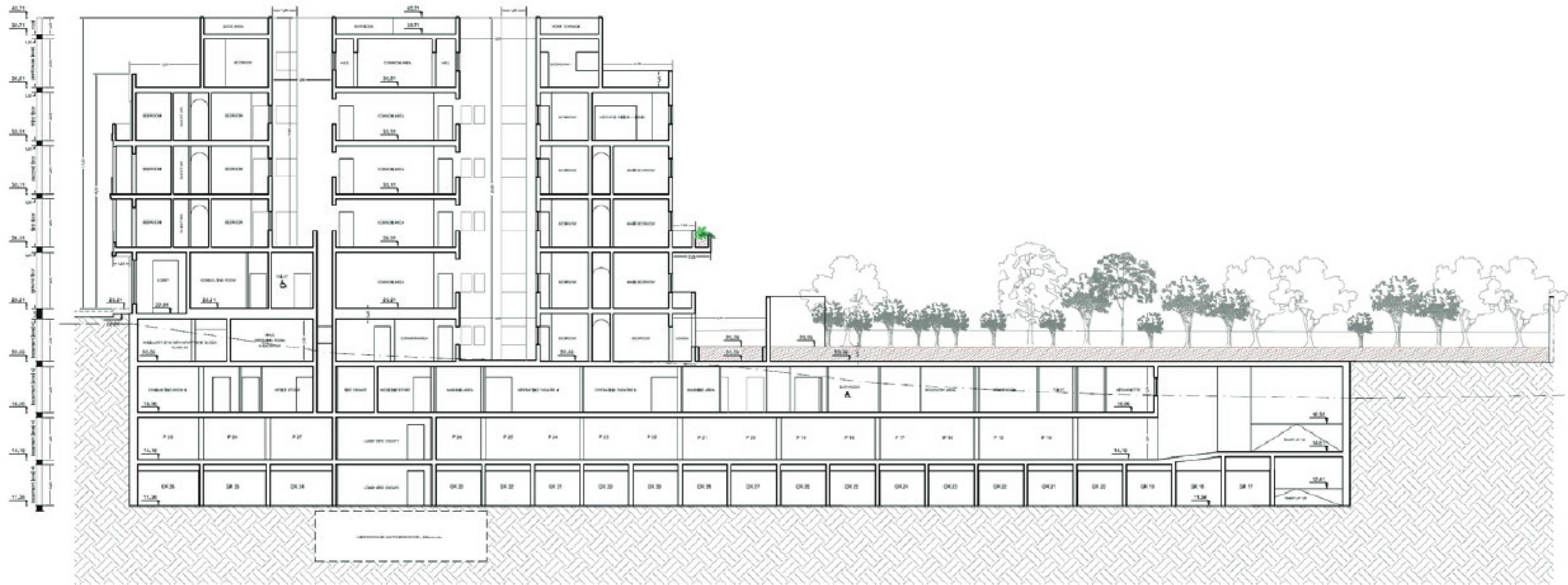








PROPOSED SIDE ELEVATION ON ENSTRAD ALLEY  
 Scale 1/16"

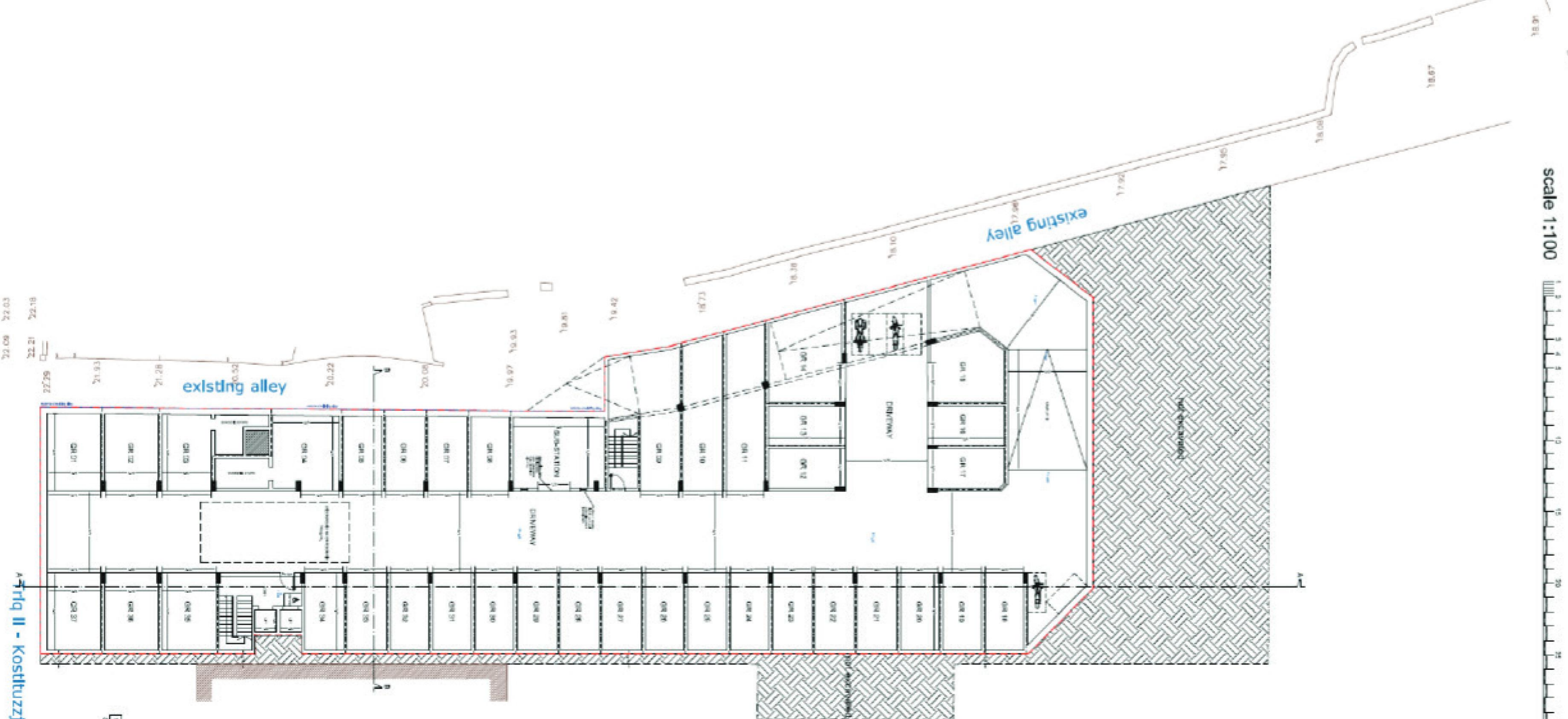


PROPOSED LONGITUDINAL SECTION A-A  
Scale 1/100



PROPOSED MAIN ELEVATION ON TRIQ IL-KOSTITUZZJONI INCLUDING STREET ANALYSIS

Scale 1:100



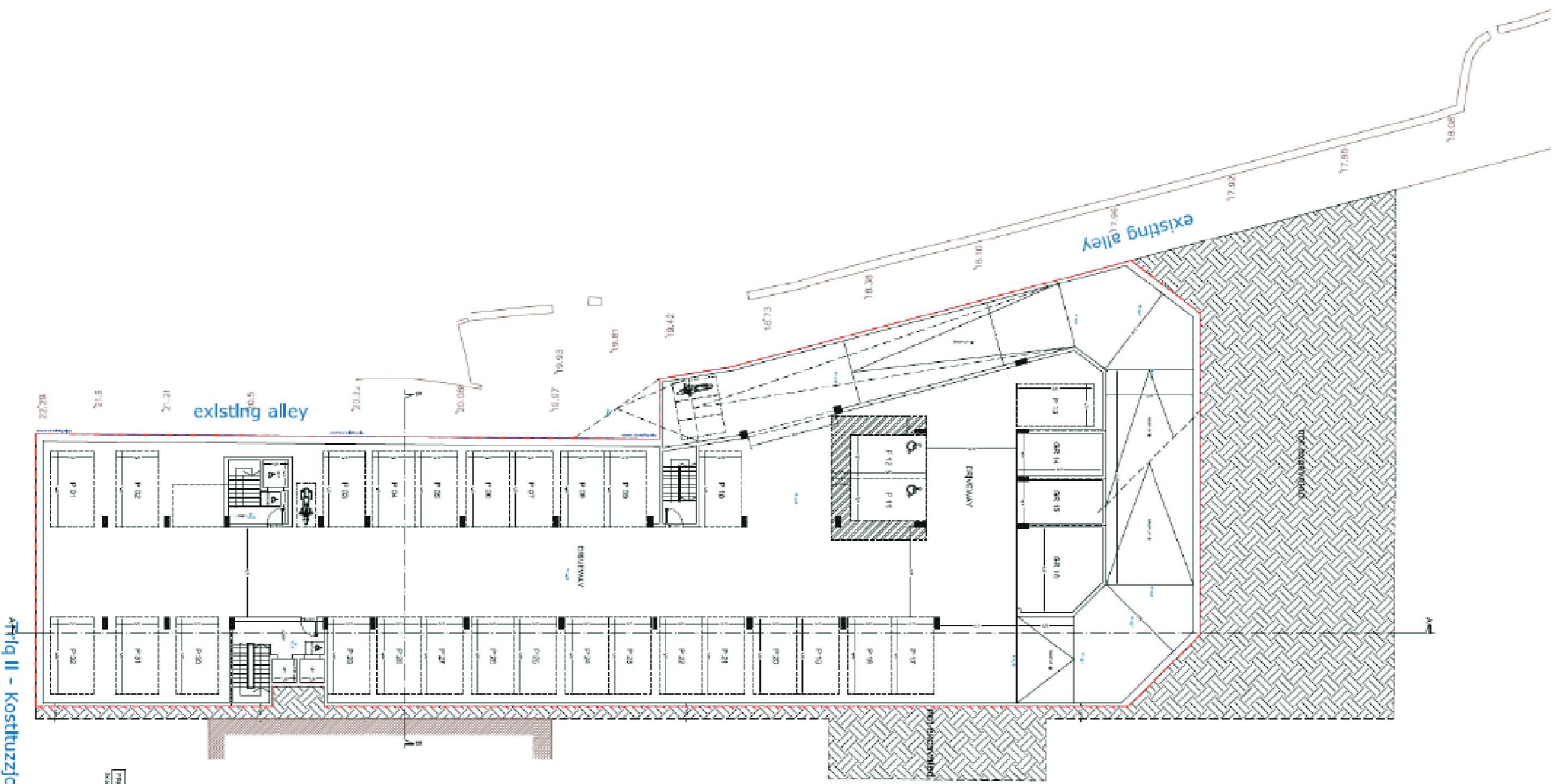
PROPOSED FLOOR PLAN BASEMENT LEVEL -4

Atrij II - Kosturzzjoni

PROPOSED FLOOR PLAN BASEMENT LEVEL -4  
SCALE 1:100

scale 1:100

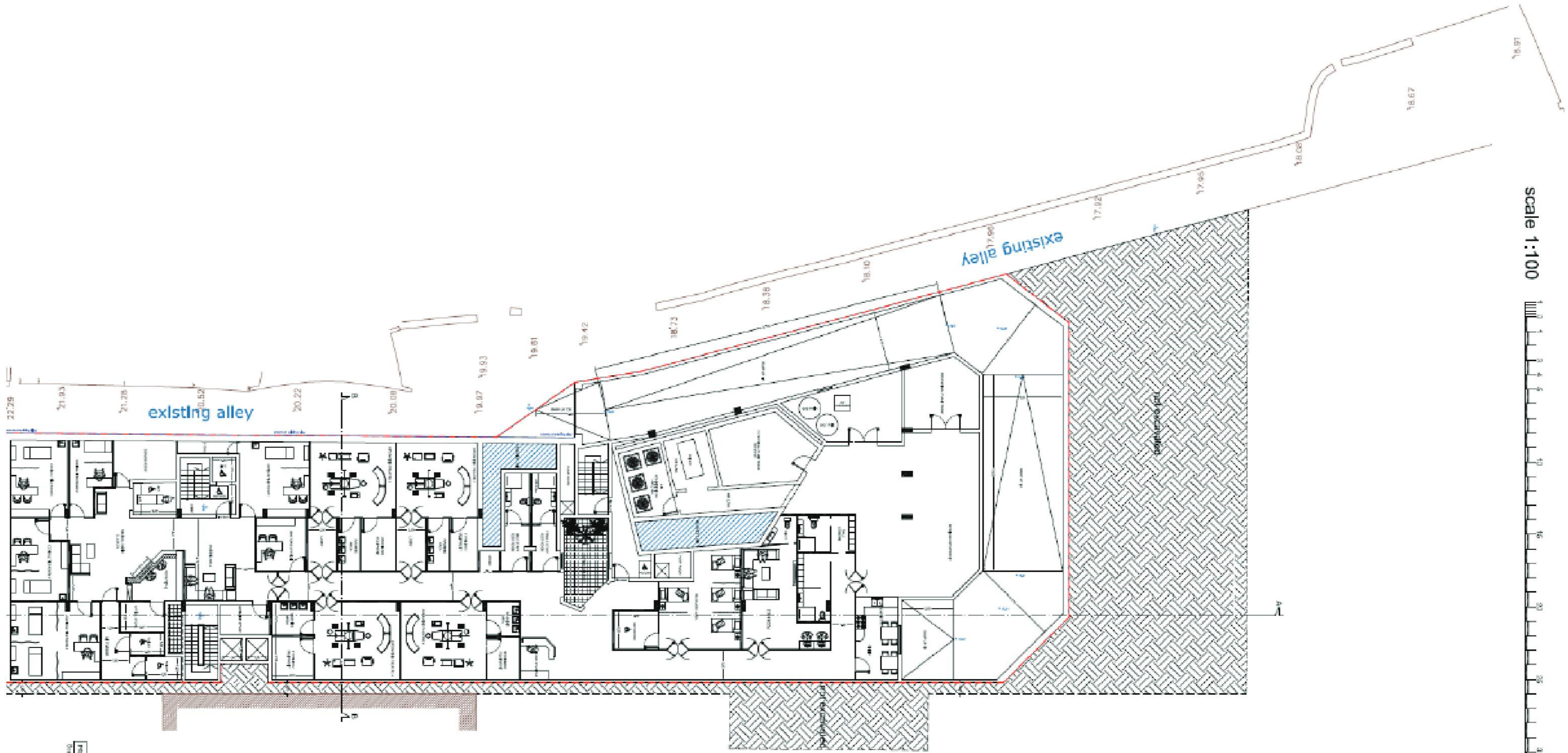




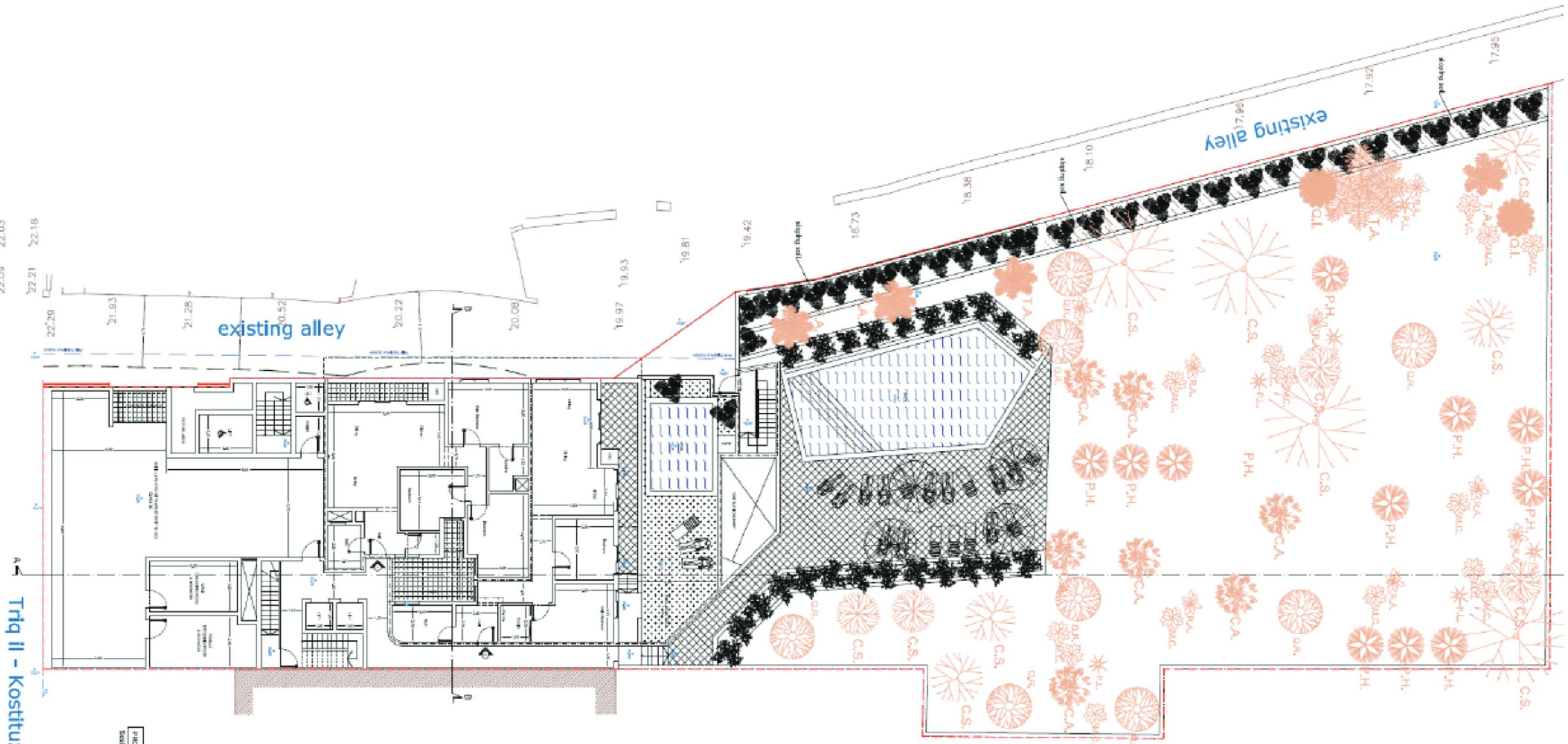
Part II - Kostuzjoni

PROPOSED FLOOR PLAN BASEMENT LEVEL -3  
SCALE: 1:100

### PROPOSED FLOOR PLAN BASEMENT LEVEL -3



PROPOSED FLOOR PLAN BASEMENT LEVEL -2

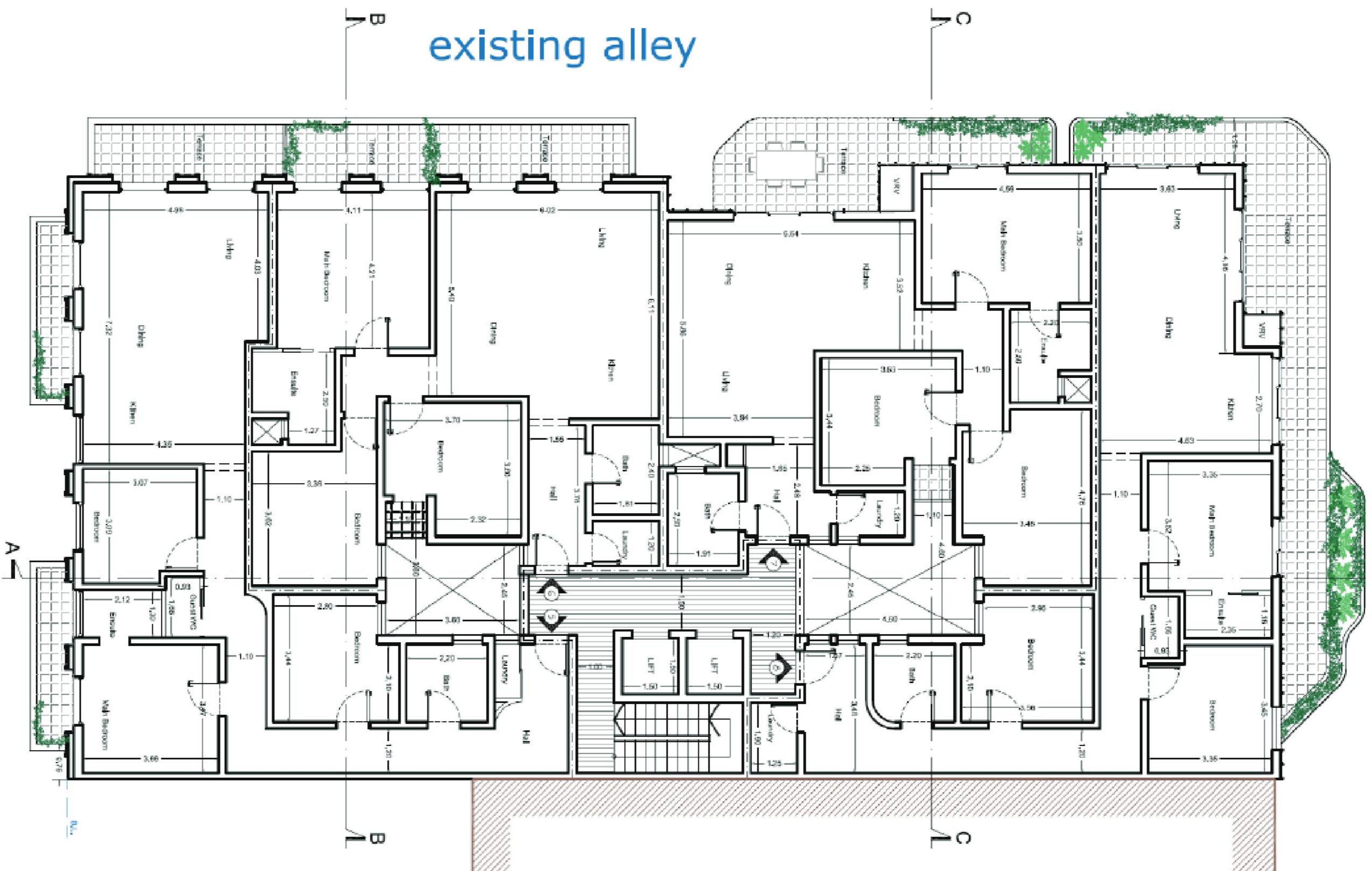


**PROPOSED FLOOR PLAN BASEMENT LEVEL -1**

PROPOSED FLOOR PLAN AT BASEMENT LEVEL -1  
Scale 1:100

**Triq il - Kostituzzjoni**

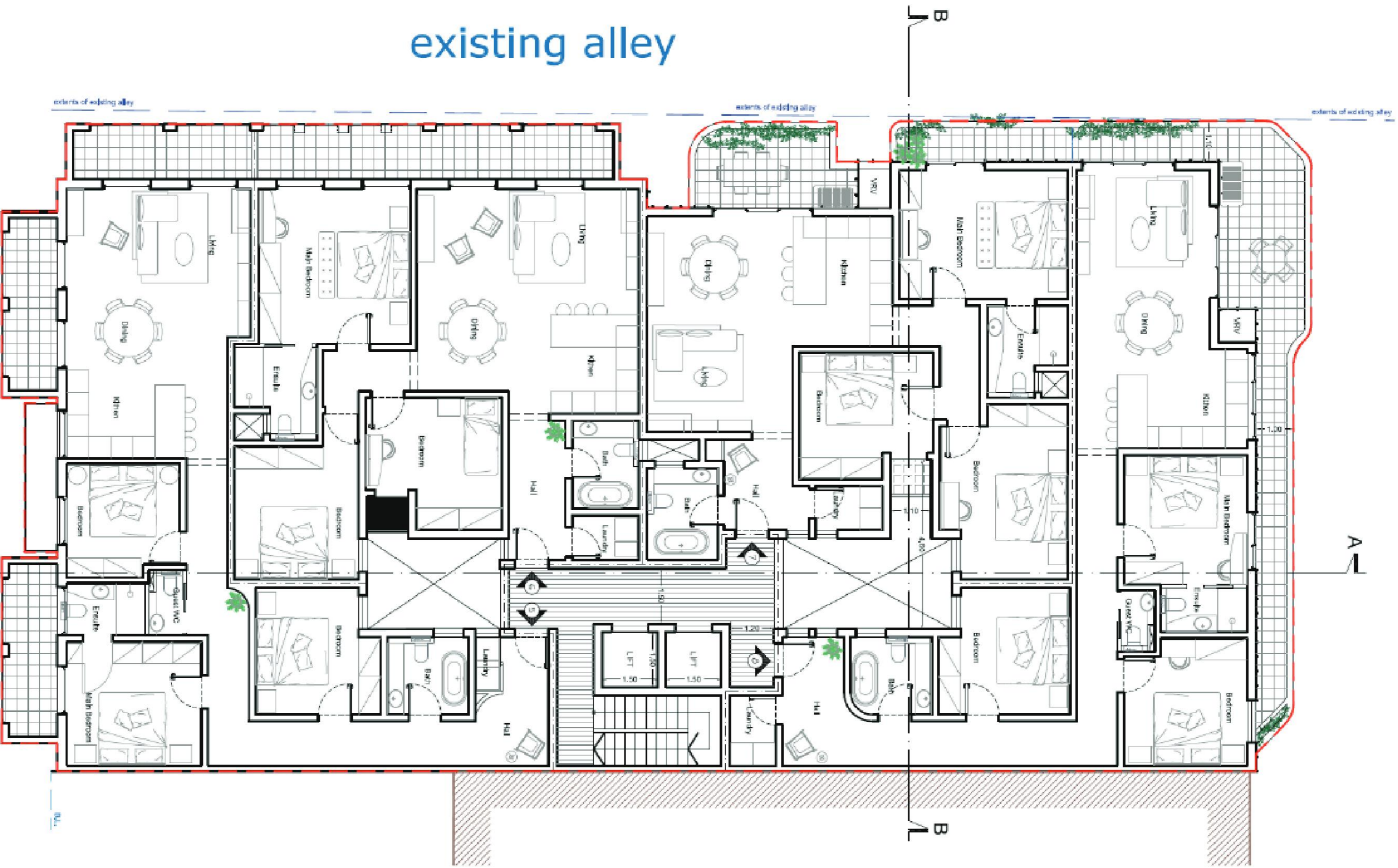
- PROPOSED LANDSCAPING**
- Chastie Tree – *Vlex agnus c*
- African Tamarisk – Tamarisk
- Judas Tree – *Cercis siliquast*
- Bay Laurel – *Laurus nobilis* –
- Carob tree – *Ceratonia siliqu*
- Allepjo pine – *Pinus halepen*
- Holm oak – *Quercus lex - 21*
- Nettle tree – *Celtis australis -*
- Common elder – *Sambucus*
- English oak – *Quercus robur*
- Myrtle – *Myrtus communis - :*
- Lentisk – *Pistacia lentiscus -*
- Mediterranean buckthorn – *F*
- Sandarac gum tree – *Tetrac*



existing alley

# Triq il - Kostituzzjoni

PROPOSED FLOOR PLAN AT FIRST FLOOR LEVEL

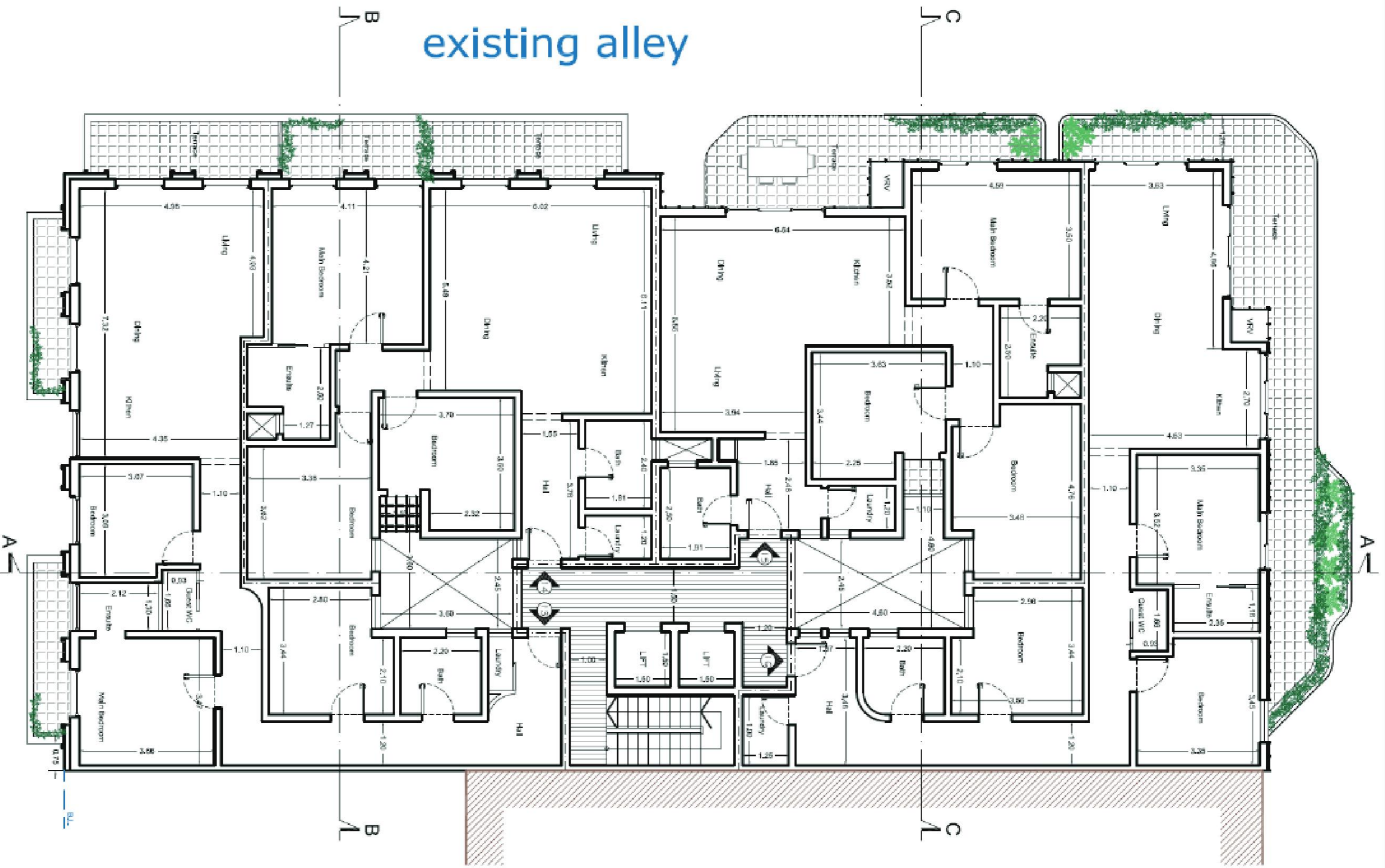


existing alley

# Triq il - Kostituzzjoni

PROPOSED FLOOR PLAN AT FIRST FLOOR LEVEL

Scale 1:100

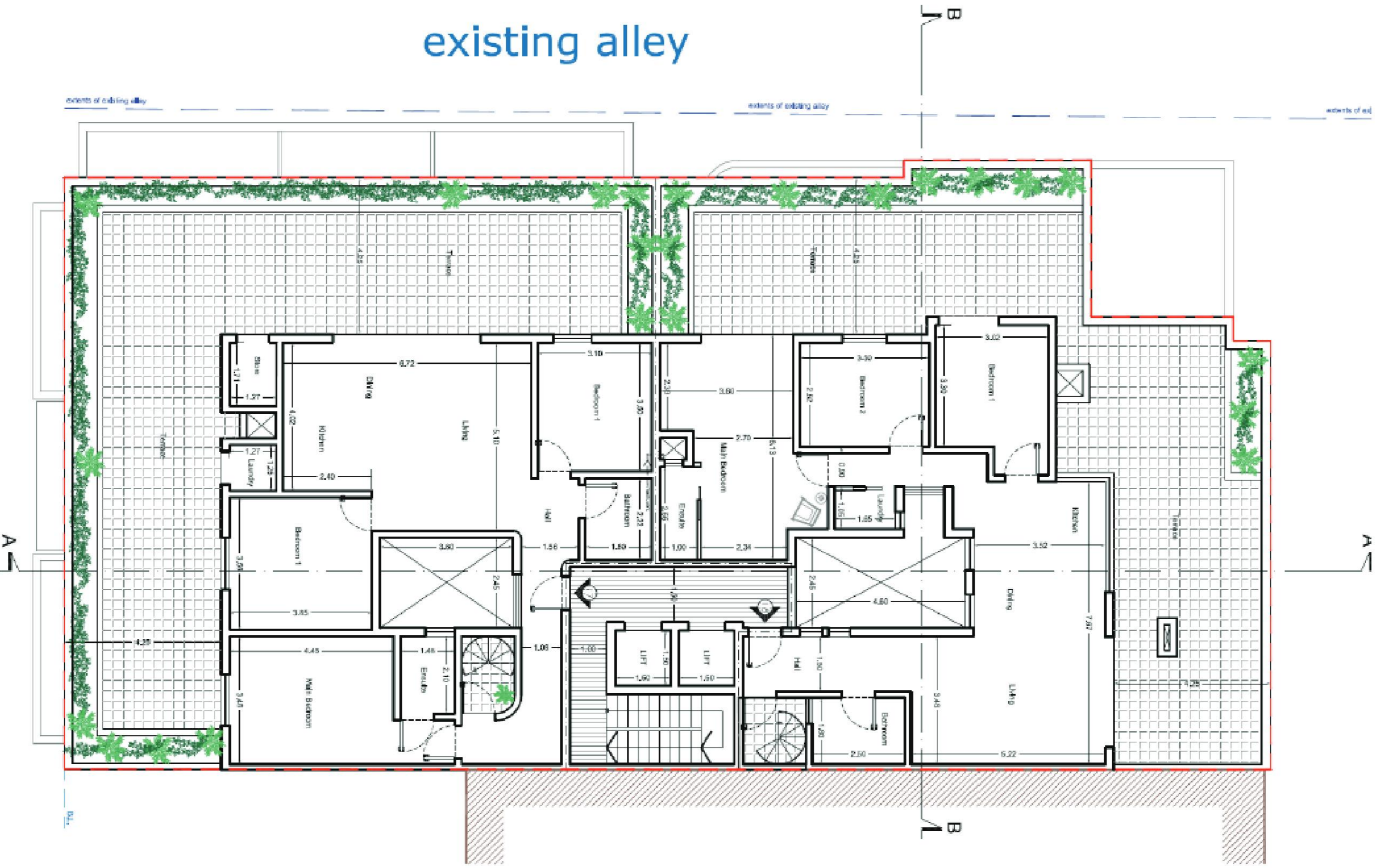


existing alley

# Triq il - Kostituzzjoni

PROPOSED FLOOR PLAN AT THIRD FLOOR LEVEL

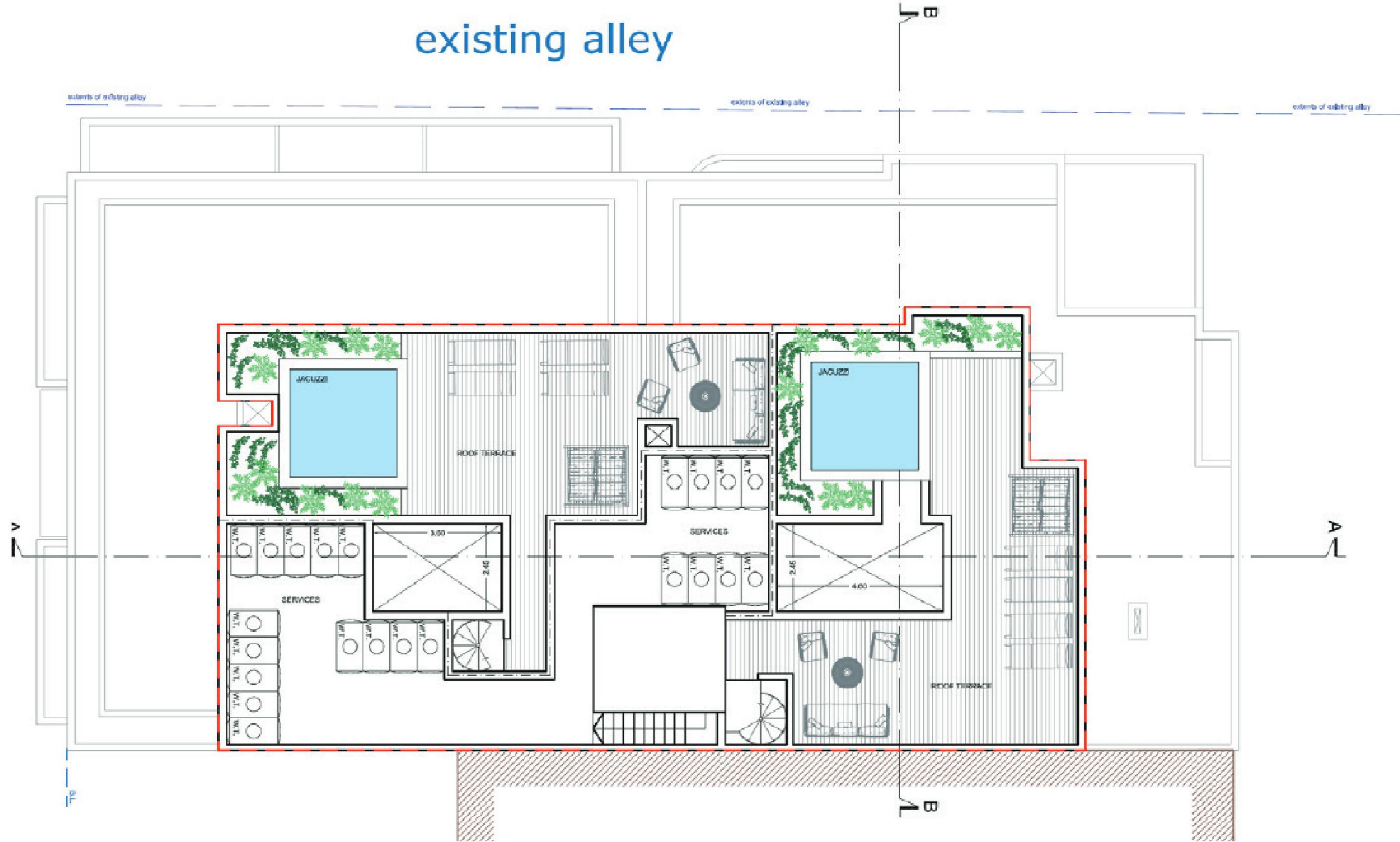
existing alley



# Triq il - Kostituzzjoni

PROPOSED FLOOR PLAN AT PENTHOUSE LEVEL  
Scale 1:100

existing alley



PROPOSED FLOOR PLAN AT ROOF OVER PENTHOUSE LEVEL  
Scale 1:100

